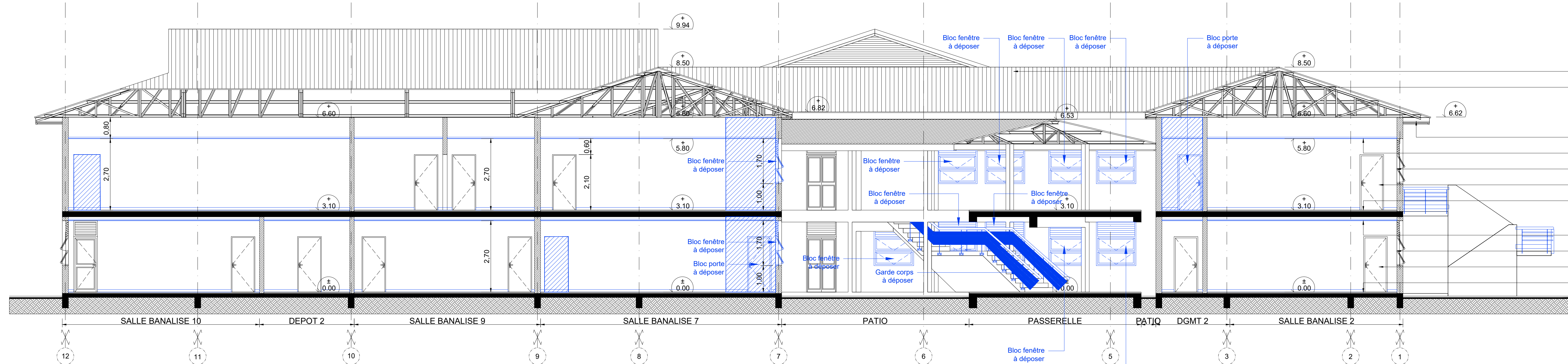
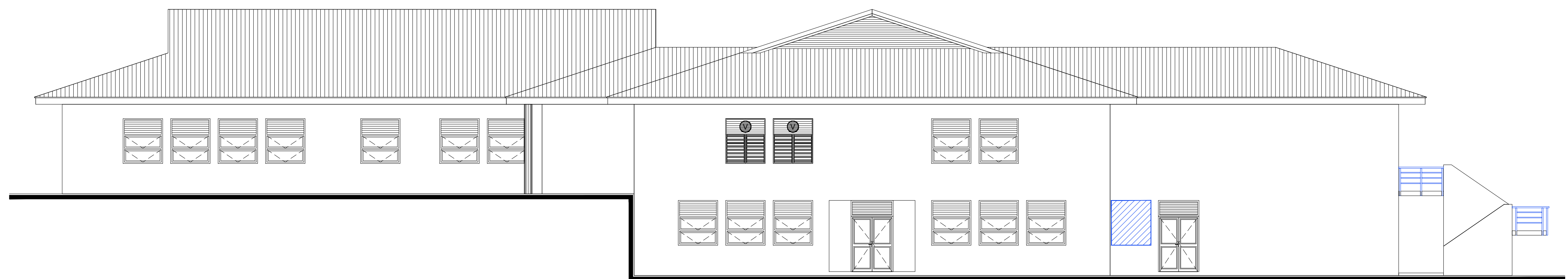


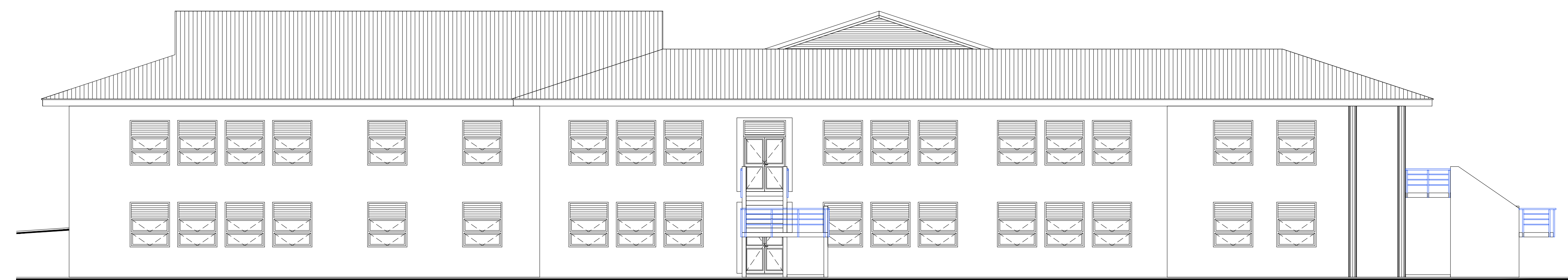
COUPE / ELEVATION ETAT DES LIEUX G01



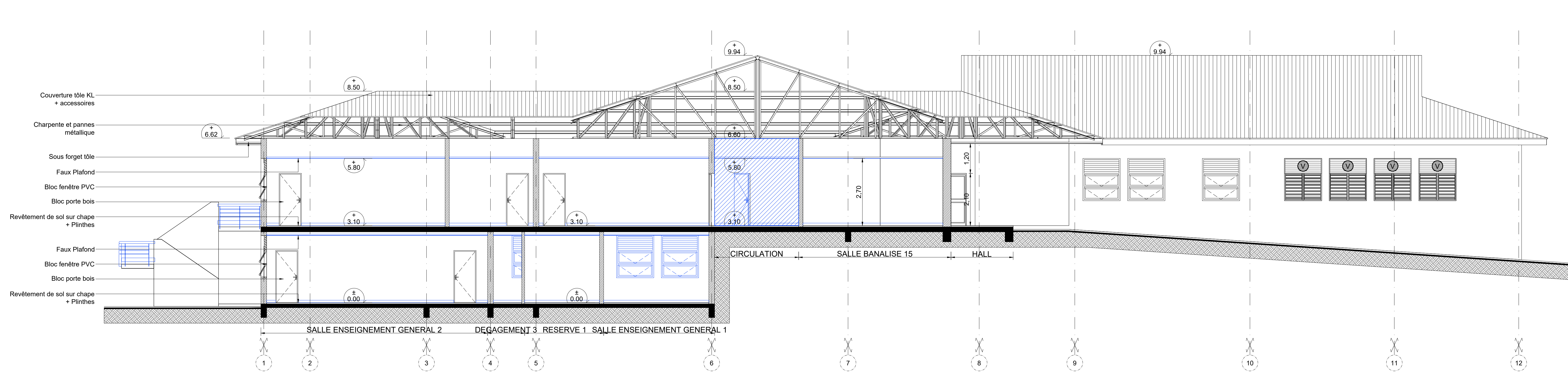
COUPE / ELEVATION EDL G02



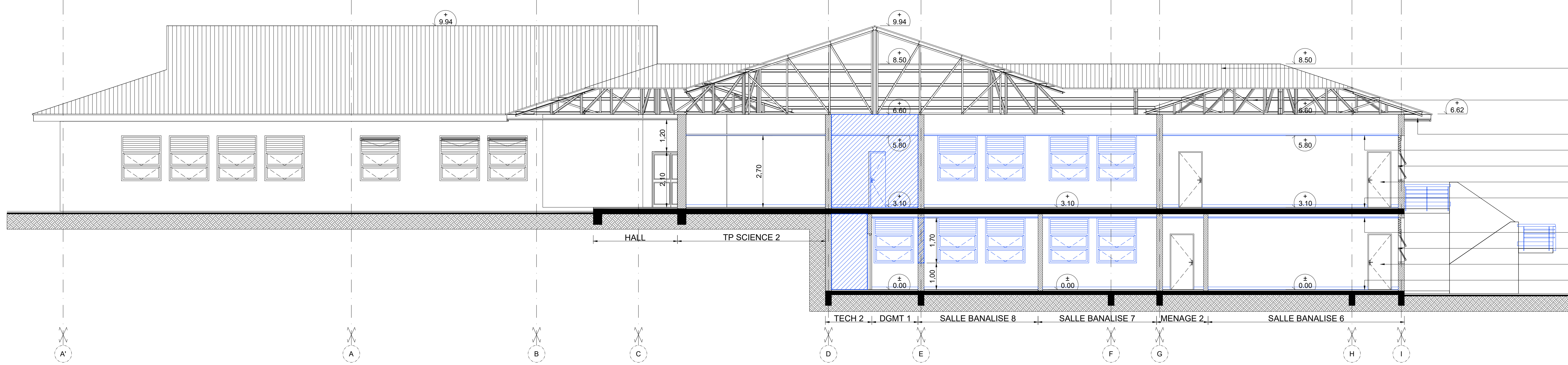
FACADE EDL SUD-EST



FACADE EDL NORD-EST



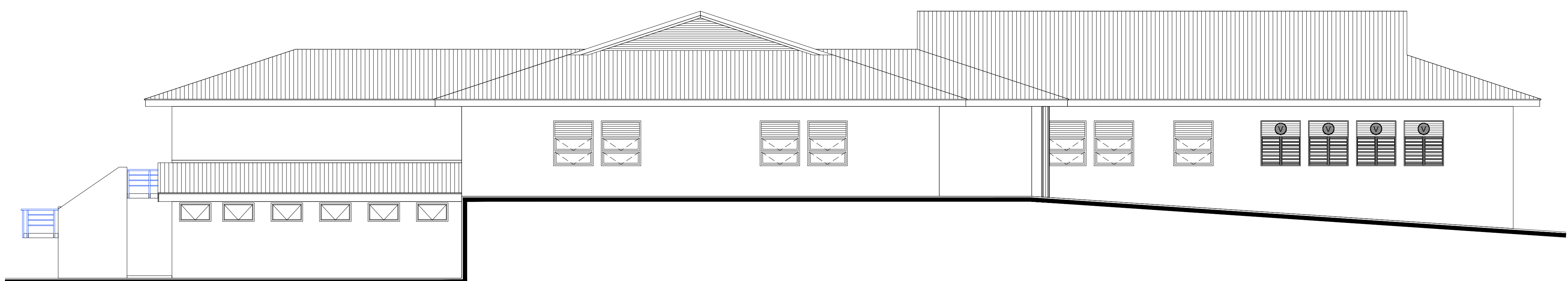
COUPE / ELEVATION ETAT DES LIEUX G03



COUPE / ELEVATION ETAT DES LIEUX G04



FACADE EDL SUD-OUEST



FACADE EDL NORD-OUEST

LEGENDE DEMOLITION - DEPOSE

LEGENDE MURS

NOTA - PROPRIETE ARTISTIQUE ET INTELLECTUELLE

NOTA:

**REHABILITATION ET EXTENSION
DU LYCEE D'ETAT DE WALLIS & FUTUNA
- ILES DE WALLIS & FUTUNA**

ETAT DES LIEUX

PLANCHE ARCHI. N°03 - TRANCHE OPTIONNELLE 02

DESSINS

VISA

ECHELLES : 1/75° - 1/100°

DATE : le 10 MARS 2025